

AMS NEVE DFC GEMINI



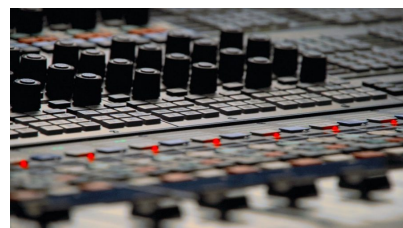
The DFC Gemini is by far the most accomplished digital mixing console designed specifically for multi-format film dubbing and post production. With an unrivalled installation base, DFC is the standard among the world's premier motion picture facilities including Warner Brothers, Disney, Fox, Skywalker Sound, De Lane Lea and Yash Raj Film. In fact, over 70% of international blockbusters are mixed on the DFC.

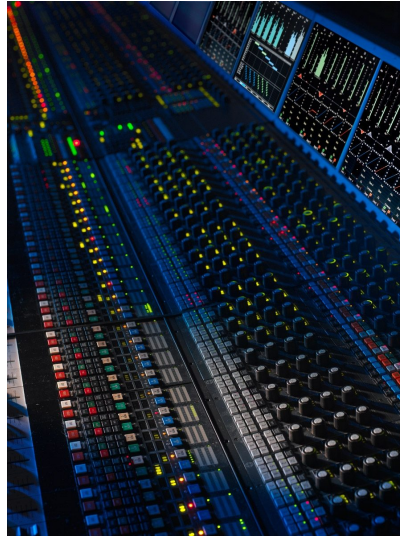
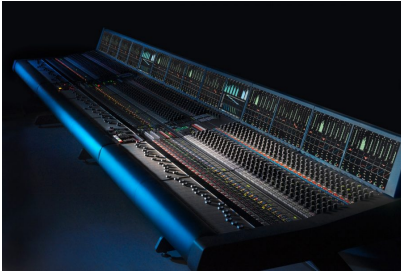


Cena: \$0,00

Kategorie: [Audio](#), [Konsolety studyjne](#)

GALLERY IMAGES





OPIS

Performance

From the outset, the PS-1 was designed for optimum mix performance. At the heart of the console is DSP, the world's most powerful mix engine, capable of delivering the legendary Neve sound across 1000 audio signal paths at 96kHz, 24 bit in a single, high-resolution DFC signal-processing tower. No other digital post production console can offer the sheer power required to handle the demands of tomorrow's content.

Control Surface

To deliver the ultimate mixing experience usability is of paramount importance and AMS Neve's wealth of experience in ergonomic design has created the most flexible surface in the industry designed to maximise both controllability and feedback to the user.

To accommodate a large number of inputs within a realistic working footprint, the console surface is semi assignable with signal paths and functions such as EQ and Dynamics mapped to provide fast and intuitive operation. Any channel strip can control all the resources on a mono, stereo or up to eight channel inputs.

The control surfaces give instant access to every aspect of routing and monitoring on matter how complex the mix. The channel strip provides total control with the patented touch

sensitive Logicator pots, giving instant visual reference to each knob setting. Through ease of use the PS-1 has arisen as the market leader in predominantly freelance markets.

Enhanced visual feedback is provided by ViewMix, high resolution TFT monitors, allowing you, for the first time, to see, hear and feel your mix. The most complex setups are now simple to control. WavTrak display of audio track data by channel is the most significant innovation of its type since scrolling waveforms, providing the user with level and dynamics metering, graphical EQ curve and audio waveform information on a path-by-path basis.

Automation

Encore:2 is the latest generation of the acclaimed Encore automation, delivering revolutionary new Reconfirm and Mix Import features as well as Automation in Stop and Mix Audition.

Star Command provides effortless control of Pro Tools™, Nuendo, Pyramix™ and Oasis™ systems, including plug ins, from the console surface via HUI™.

Encore:2 Automation Reconfirm delivers efficient workflow as picture re-cuts go up to the last possible moment. Change lists are taken into Encore:2 and the mix automation re-confirmed to match the new cut, significantly reducing the workload on the Mixer and allowing the Director freedom to make creative changes right up to the dub.

Integrated automation re-conform. Integrates with AMS Neve CineFile / AudioFile SCX for simultaneous automation and audio re-conform.

- TFT Channel display
- TFT Master display
- Encore:2 automation system (compatible with 1800 AMS Neve consoles)
- Off-line edit options offering enormous cost savings
- Most powerful DSP engine - Ultra Scale Processing cards - 2000 paths at 96kHz
- Neve EQ, Dynamics and Bass Enhancement plug ins with linked dynamics
- Faster Control Surface
- Expanded 12 Stem Mixing
- MIOS96 new 96kHz I/O system with full remote control
- Complete integrated machine control
- Optional Monitor Facilities Rack
- WavTrak display providing the user with level and dynamics metering, graphical EQ curve and audio waveform information on a path by path basis.

- Optional CineFile integrated Dubber/Recorder